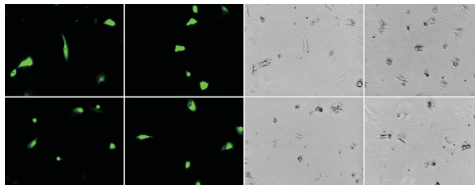




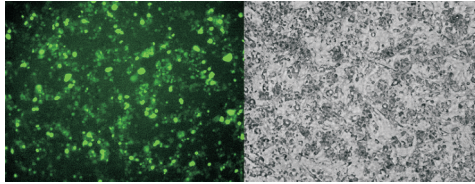
OMNI Universal Electroporation Solution™

OMNI Solution works with the widest range of mammalian cell types and is compatible with all electroporation instruments and protocols.

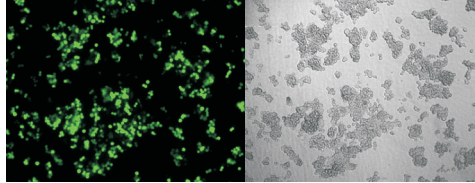
OMNI Solution is formulated to help cells recover from electric shock. It works best for electroporation of siRNA, DNA, and siRNA/DNA mixtures in primary cells and other 'difficult' cell lines.



Human iliac artery smooth muscle cells 72 h post transfection with pGFP. AMAXA Nucleofector/U25



Differentiated mouse adipocytes 50 h post transfection. 2 x 6 ms sw pulses @ 1kV/cm. Bio-Rad XCell.



RAW 264.7 cells 36 hours post transfection with pGFP. Exponential pulse @ 2.3kV/cm, 50 μ F.

© 2008 OMNI Transfection LLC, USA
omnitransfection.com

Recommended Protocol

1. Pre-warm 6-well plates with 3 ml of culture medium per well. Pre-warm OMNI Solution to 37°C.
2. Suspend 5×10^5 cells in 100 μ l OMNI Solution (0.2 cm gap cuvette). Add 0.5-5 μ g DNA or 0.1-1 nmol siRNA and tap 10 times to mix.
3. Electroporate following the instrument manufacturer's protocol. A comprehensive list of electroporation conditions tested in various mammalian cell types is available at <http://www.btxonline.com/applications/protocols/mammalian/Default.asp>
4. Immediately after pulsing add 500 μ l warm medium to the cuvette, then transfer the cells onto the pre-warmed plate.

Package contains OMNI Universal Electroporation Solution™ and pGFP control plasmid. Store at 4°C for 3-4 days or at -20°C for 6 months.



Optimization / Troubleshooting

1. If the cell survival rate is low, decrease the field (V), capacitance (μ F), or pulse duration, or replace exponential pulses with square wave (sw) pulses.
2. If transfection efficiency is low, increase the voltage or pulse duration, increase the number of sw pulses, or replace sw with exponential pulses.
3. To develop your own protocol, start with one of the following conditions for 'easy' cell types such as HeLa or 293: a) Exponential pulse @ 0.65 kV/cm, 500 μ F; b) Exponential pulse @ 1.5 kV/cm, 25 μ F; c) 25 ms square wave pulse @ 0.55 kV/cm. Continue with steps (1) and (2).
4. Call us or write with any questions or comments: